

JANUARY 2010

# Burke's BACKYARD

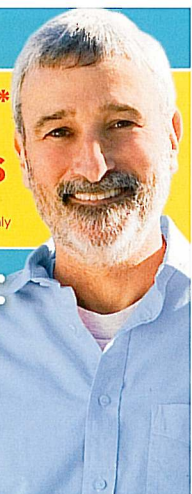
AUSTRALIA'S ORIGINAL LIFESTYLE PROGRAM

JANUARY 2010

**FREE SEEDS\***  
winter tomatoes  
to plant now! \*Aust only

**HOLIDAY FUN:**  
BUMPER QUIZ

**how to take**  
better photos



make your  
backyard  
look bigger

**CLEVER WAYS**  
TO SPICE UP  
YOUR GARDEN

pets on  
holiday:  
travel tips

## aussie plants

PLANT ONE FOR  
AUSTRALIA DAY

### JOBS TO DO

- ✓ plant leeks
- ✓ dig potatoes
- ✓ buy bulbs
- ✓ plant a tree

red-flowering  
gum tree

**DAZZLING**  
**CANNA LILIES**

JANUARY 2010 \$6.75 NZ \$7.80 (incl GST)



9 313006 005476

PRINT POST APPROVED PP255003/03528

dbp

**INSIDE** GROW SOME MOZZIE-MUNCHING PLANTS

# new releases

Drought-hardiness is our theme for the new releases for January, as all these plants can cope with a dry spell in style.

## Aloe 'Bottlebrush'

Aloe-Aloe Horticulture, (07) 3371 2986, [www.aloe-aloe.com.au](http://www.aloe-aloe.com.au)

This hybrid aloe will make a stunning feature plant in any garden because of its strong architectural form and its glowing orange flowers in winter. The attractive yellow buds open slowly, exposing striking orange stamens that resemble a bottlebrush. These blooms appear on a single trunk towering about 2.5m above rosettes of large, green, sword-shaped

leaves to about 1m wide. Light frost-hardy and drought-hardy, it needs little maintenance and will grow best in full sun. Aloes can be used in most garden and landscape styles, modern or traditional, formal or informal. This new Aloe 'Bottlebrush' is available across the country through Garden Express – [www.gardenexpress.com.au](http://www.gardenexpress.com.au)

**NEW!**  
Sun-loving  
plus winter  
flowers



Aloe 'Bottlebrush'



A. arborescens



A. ferox

## Growing tips: hardy aloes

With more than 300 members, the aloes are a big family of succulent plants mostly from semi-arid parts of Africa and Arabia. Some grow as trees but most are shrubby or even smaller and any of the forms sold in Australia would make a terrific choice for a sunny, free-draining spot that you don't want to have to water a lot. All types produce clusters of tubular flowers that are attractive to nectar-eating birds which extract the honey by inserting their beaks into the flowers. Aloes will take the odd light frost where winters are dry but they are not suitable for areas where winters are both frequently frosty and also rainy.

Compiled by Jenny James, growing tips by Geoffrey Burnie  
additional photos by Photolibary